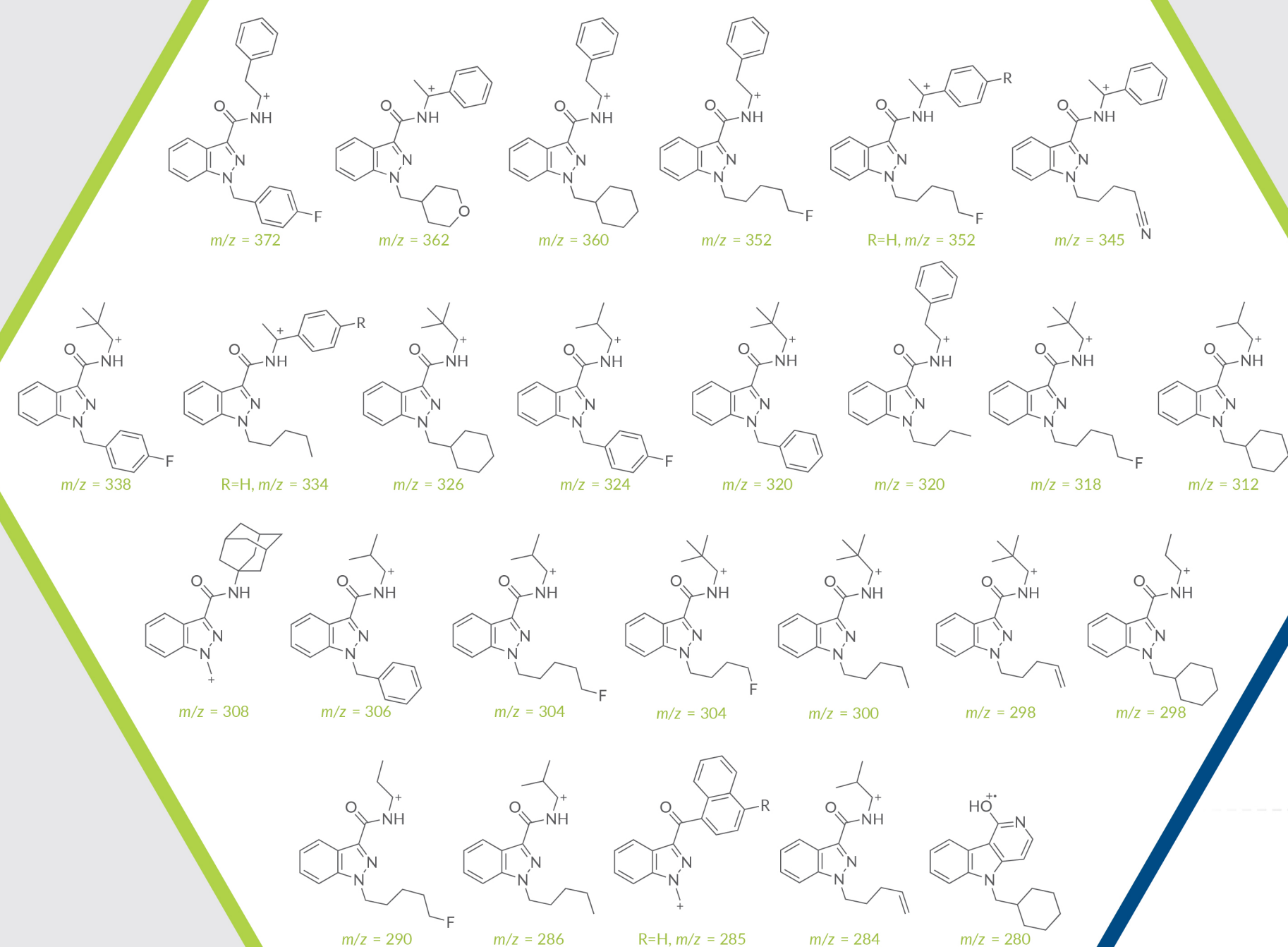
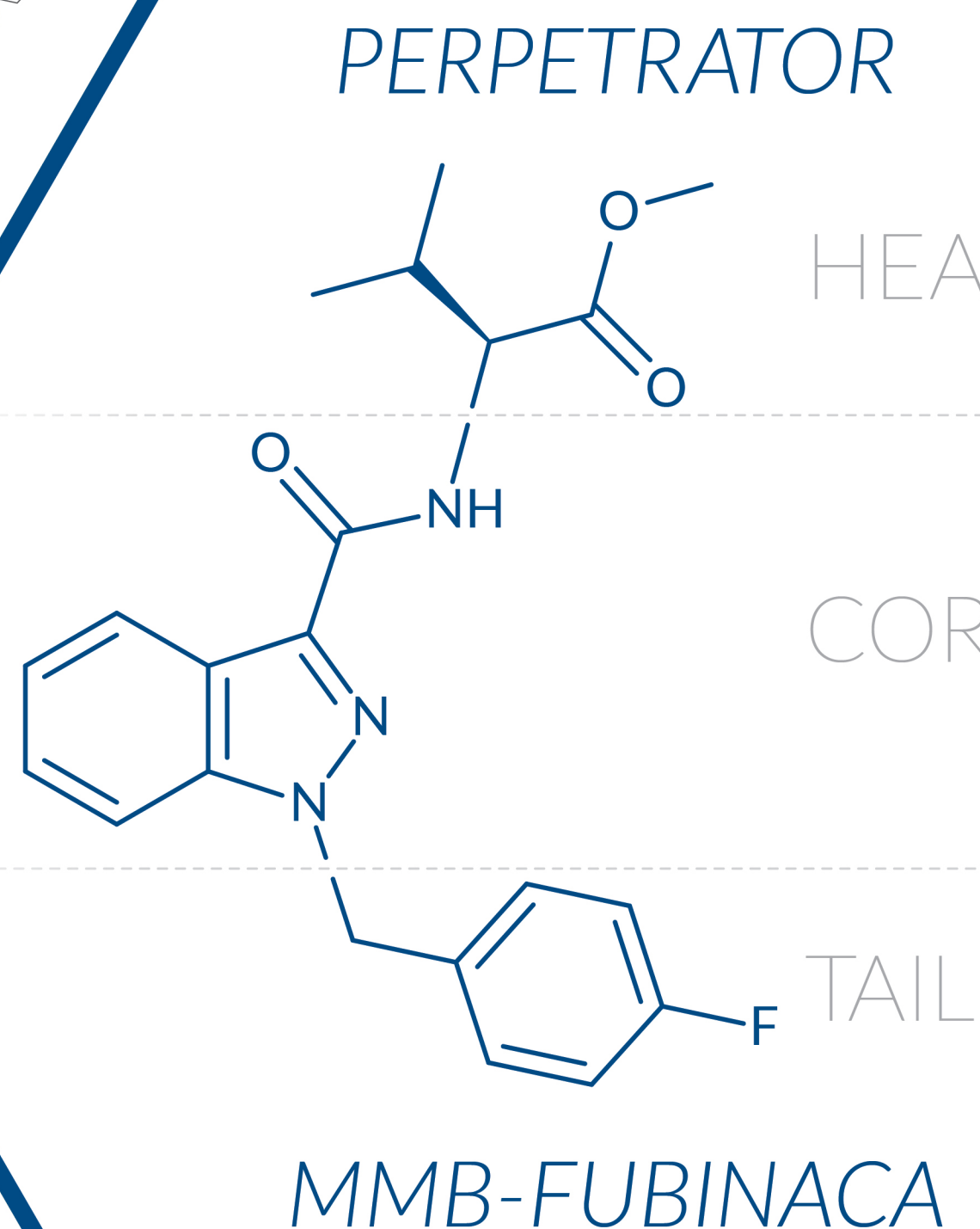
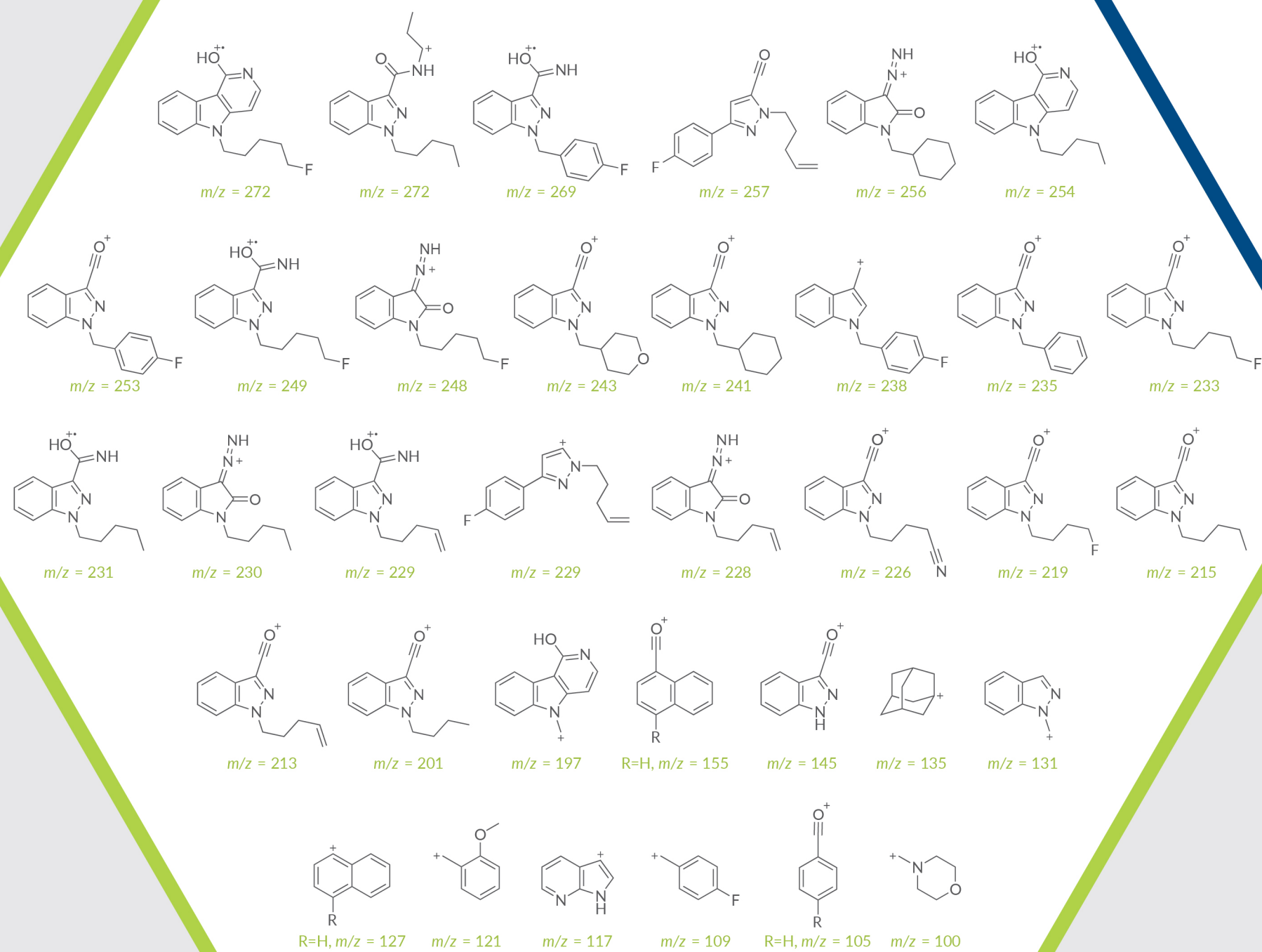


Laboratory Guide for SYNTHETIC CANNABINOID Identification and Naming

Common Synthetic Cannabinoid Mass Spec Fragments $m/z = 372-280$



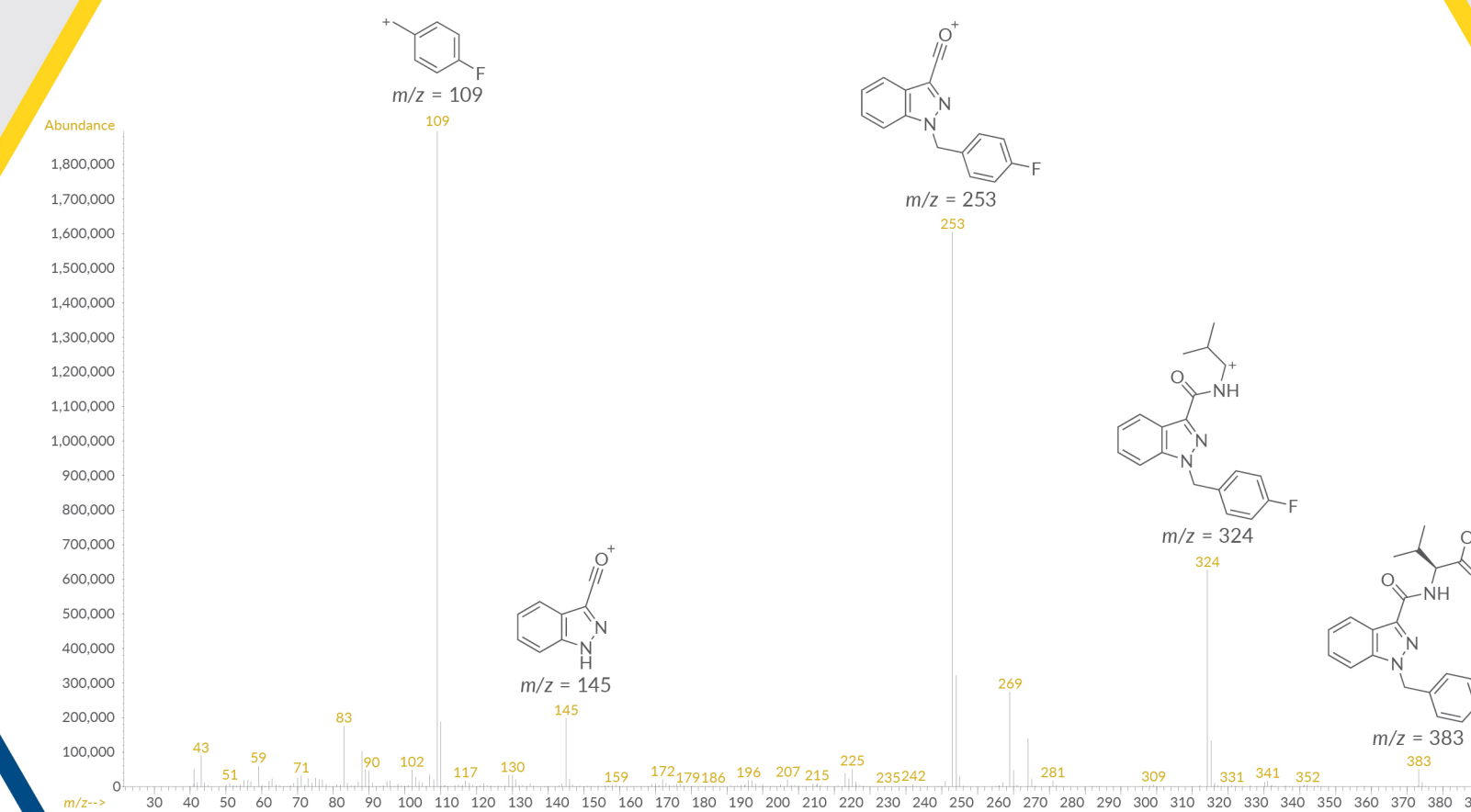
Common Synthetic Cannabinoid Mass Spec Fragments $m/z = 272-100$



Systematic Name: MMB-FUBINACA
 Synonyms: AMB-FUBINACA, FUB-AMB
 Molecular Weight: 383.4
 Cayman Item No.: 9001960
 DEA Schedule: Schedule I
 DEA No.: DEA 7021



Mass Spectrum of MMB-FUBINACA



Tips for GC-MS Interpretation:

Swapping the synthetic cannabinoid core:

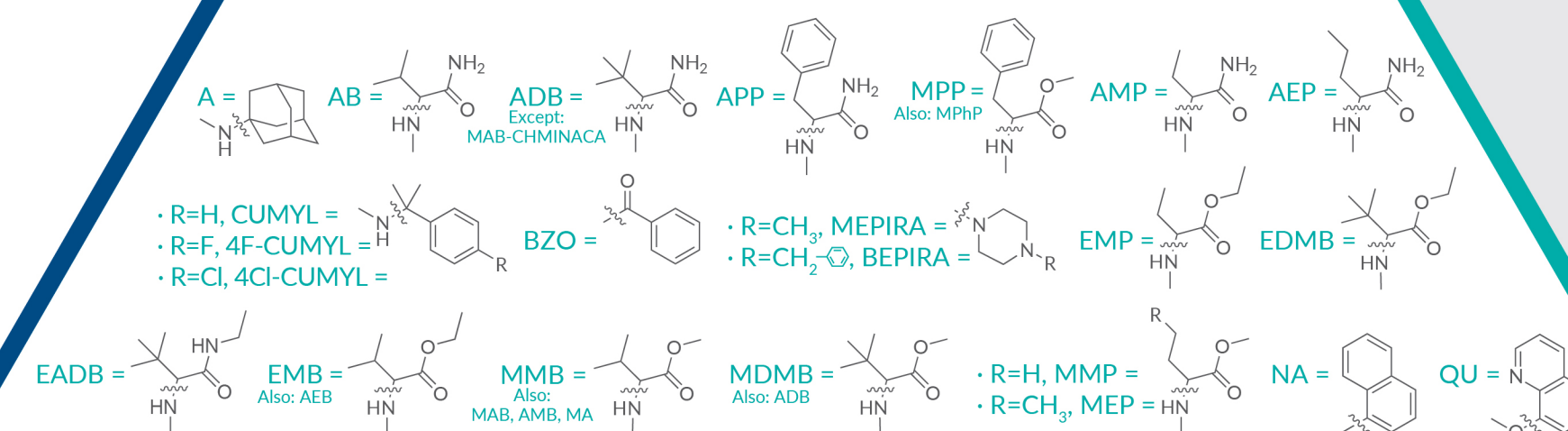
The difference in mass (m/z) for the indole version of a comparable indazole is -1.

Here are some common substituents to replace an H (such as where R is noted in the Common Mass Spec Fragments sections to the far left):

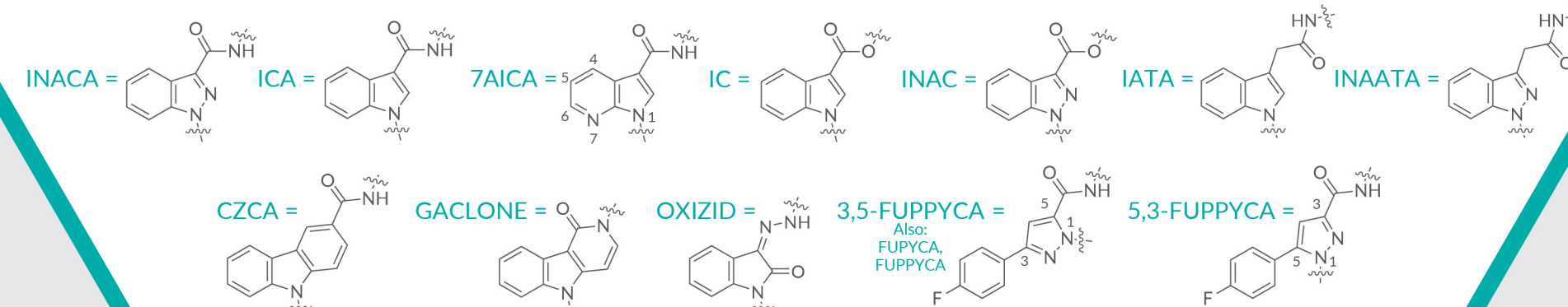
- If R = CH₃, the m/z is +14
- If R = F, the m/z is +18
- If R = CN, the m/z is +25
- If R = CH₂CH₃, the m/z is +28
- If R = OCH₃, the m/z is +30
- If R = Cl, the m/z is +34

Synthetic Cannabinoid Naming Chart

HEAD GROUPS



CORE GROUPS



TAIL GROUPS

